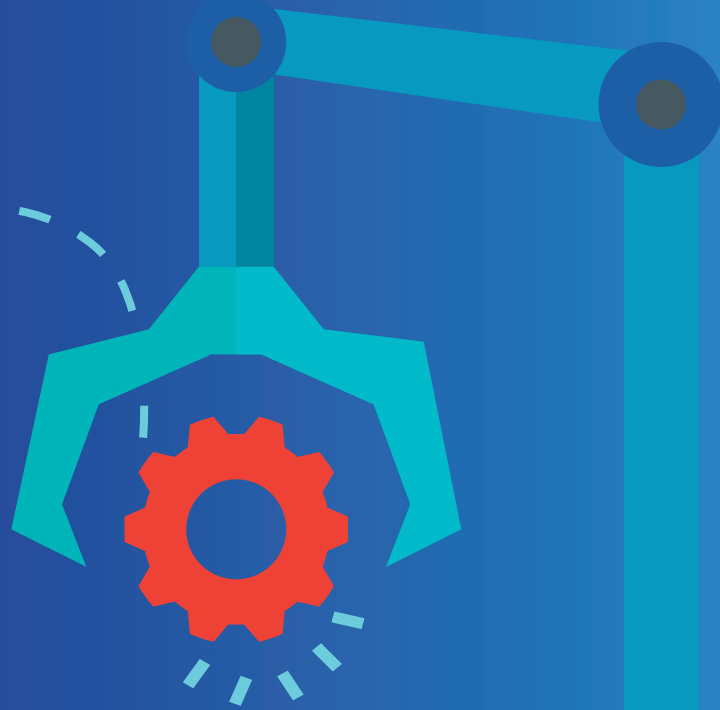


Read the article



Managing Manufacturing Growth





Manufacturing Solutions | Growth in the IIoT

Introduction: Manufacturing Growth - Providing Solutions in a Growing World

For the past 30 years, the US has systematically undercut the foundation of American manufacturing through offshoring and governmental regulations - but in a new climate of manufacturing growth, we're seeing national confidence in manufacturing restored and thriving.

What strategies do you have in place to keep up with current demand and production goals?

Growth Challenges for Manufacturers

While growth is the best kind of problem to have, we've observed that managing growth in the manufacturing environment can be even more difficult than managing manufacturing cutbacks:

- SHORTAGE OF SKILLED LABOR
- CONTINUED TREND OF UNDERFUNDED MANUFACTURING STAFFING BUDGETS
- THE CURRENT MANUFACTURING LABOR FORCE IS OVERWORKED/RETIRING
- PRODUCTION CAN'T KEEP UP WITH DEMAND
- REACTIVE MANUFACTURING AND ASSET MANAGEMENT CULTUR PERPETUATES BROKEN SYSTEMS

How to optimize the performance of assets

To optimize manufacturing growth, develop an **Asset Management Strategy** that will:

- Drive performance of the assets
- Cover the whole lifecycle of assets
- Be in alignment with business goals
- Simultaneously manage risks

Beyond the Basics: Software for Manufacturing Systems in the IIoT (Industrial Internet of Things)

The foundation of a thriving manufacturing model is a system that organizes workflows, integrates with a central database and streamlines efficiency and production while extending the longevity of critical assets.

In the IIoT that means software.

In Manufacturing that means: CMMS & EAM.

CMMS:
COMPUTERIZED MAINTENANCE MANAGEMENT

EAM:
ENTERPRISE ASSET MANAGEMENT



ONE OF THE MOST FOUNDATIONAL TOOLS IN AN ASSET MANAGEMENT STRATEGY IS A PROPERLY IMPLEMENTED CMMS

If you're still using Excel to manage your maintenance
click here to find out more about CMMS



SEPT
2018



CMMS...

ISN'T THAT JUST A WORK ORDER SYSTEM?



CMMS: More than a "Work Order Manager"

If you think CMMS is "just a work order system" you are most likely only using 20%-30% of your software and struggling with a reactive maintenance culture.

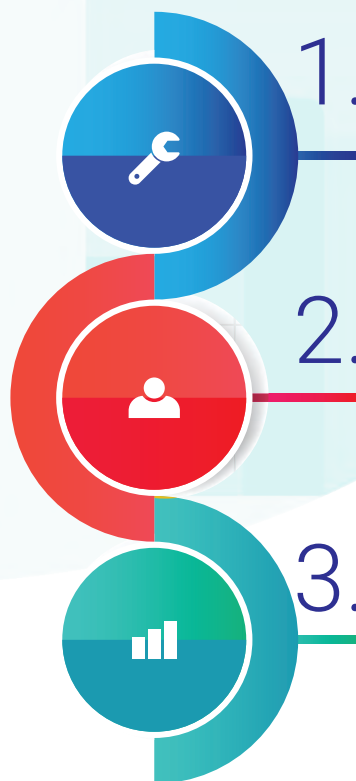
CMMS IS NOT JUST A WORK ORDER GENERATOR...

There's an age old adage that says: "You must inspect what you expect".

What world class manufacturers know is that a CMMS, when fully implemented and utilized, provides an invaluable look into the conditions of critical assets.

*Learn how to properly set up
and implement a CMMS here >>*

If fully implemented and utilized effectively, CMMS does three very important things that significantly improve production output while decreasing operational costs:

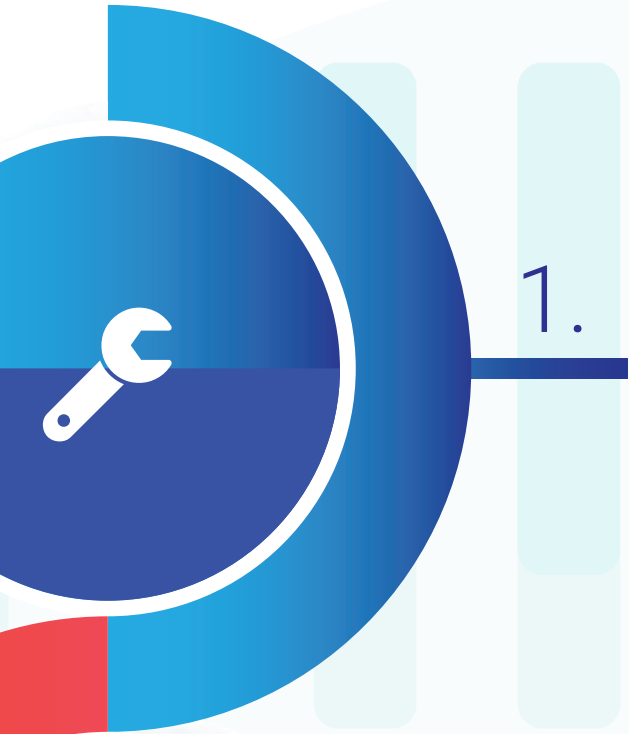


1. A HEALTHY CMMS SYSTEM DIAGNOSES THE HEALTH OF YOUR OPERATION AND IDENTIFIES PROBLEMS BEFORE FAILURE OR BREAKDOWN

2. A CMMS SYSTEM ACTS AS AN ASSET MANAGEMENT TRANSLATOR: LET YOUR CRITICAL ASSETS TELL YOU WHAT THEY NEED

3. A FULLY IMPLEMENTED CMMS SYSTEM IS THE FOUNDATION OF WORLD CLASS MANUFACTURING





A HEALTHY CMMS SYSTEM DIAGNOSES THE HEALTH OF YOUR OPERATION AND IDENTIFIES PROBLEMS BEFORE FAILURE OR BREAKDOWN

Think of your CMMS as the central nervous system of your assets.

In this analogy it's easy to see the importance of the flow of information from sensory organs (assets) to the brain (CMMS). All information related to your machinery, equipment and assets should flow through a central data repository and then be processed and automated according to the data provided.

A healthy manufacturing system utilizes the data repository of the CMMS - not only to manage work orders - but to assess the overall health of assets and to isolate and mitigate pain points and breakdowns (downtime) for optimal vitality.



A CMMS SYSTEM ACTS AS YOUR ASSET MANAGEMENT TRANSLATOR: LET YOUR CRITICAL ASSETS TELL YOU WHAT THEY NEED

Think of your CMMS as a skilled translator communicating between you and your assets. When you fully implement a CMMS System you're hiring a *Asset Management Translator* for your organization. Unscheduled downtime is mitigated when the needs of your assets are communicated.

If you were going to hire a translator for a very important meeting - a meeting that could determine the success of your business - would you hire a translator that wasn't completely fluent? Or would you spend the capital required to ensure clear communication? You'd hire the best.

Often plant managers resist spending capital on the implementation of a CMMS System, indelibly compromising the 'fluency', efficiency and success of the *Asset Management Translator* (the CMMS). We see it time and time again.

Instead of an *Asset Management Translator* (a robust CMMS), manufacturers implement only portions of the Maintenance Software, essentially creating a "yes man" system that doesn't translate or communicate the needs of their assets effectively. Problems are out of sight out of mind until downtime occurs - and it's not a matter of if, it's a matter of when.



A FULLY IMPLEMENTED CMMS SYSTEM IS THE FOUNDATION OF WORLD CLASS MANUFACTURING

Your CMMS is the key to defining:

- TCO - Total Cost of Ownership
- TCM - Total Cost to Maintain
- Capital Planning
- EAM Strategies
- Asset Lifecycle
- Labor Cost and Efficiency
- ROI - Return On Investment

