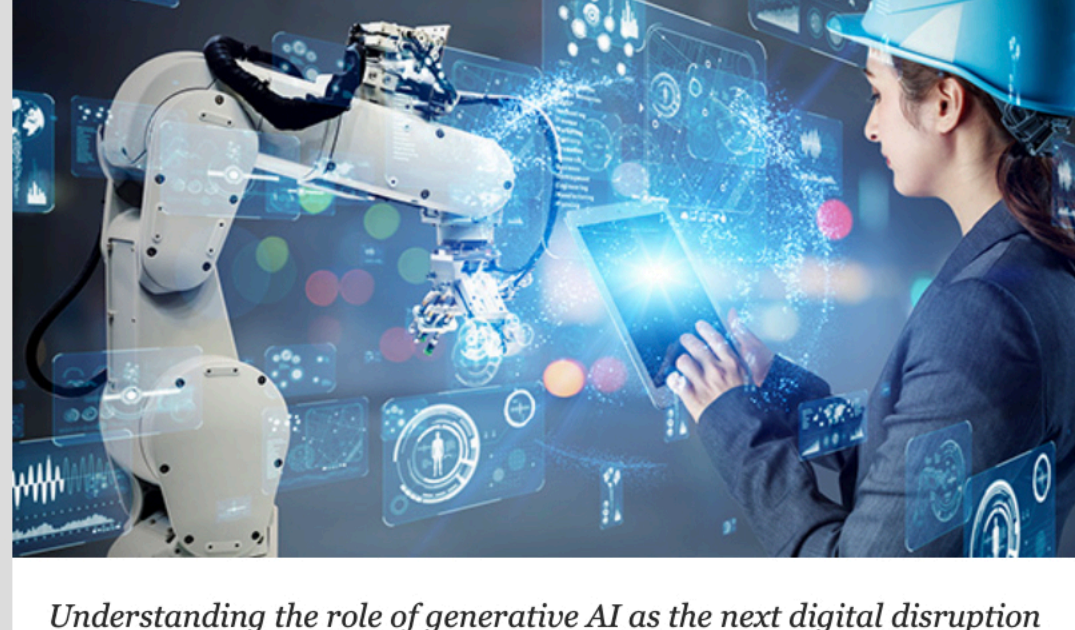


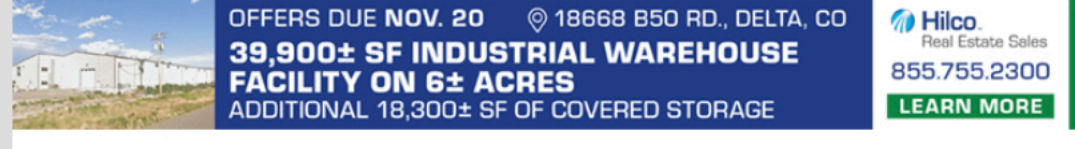
The Future of Generative AI for Manufacturers



Understanding the role of generative AI as the next digital disruption in manufacturing, as well as its challenges and opportunities.

[Read More](#)

[X Tweet](#)



OFFERS DUE NOV. 20 18668 B50 RD., DELTA, CO
39,900± SF INDUSTRIAL WAREHOUSE FACILITY ON 6± ACRES
ADDITIONAL 18,300± SF OF COVERED STORAGE
Hilco Real Estate Sales
855.755.2300
[LEARN MORE](#)



Manufacturers Find Gold in Employees with Disabilities

October is National Disability Employment Awareness Month and an opportunity to highlight an untapped talent pool—people with disabilities.

[Learn More](#)

[X Tweet](#)



A Bold Proposition to Connect the Supply Chain

Bridging the digital divide and connecting the supply chain can enhance productivity and output for manufacturers.

[Learn More](#)

[X Tweet](#)



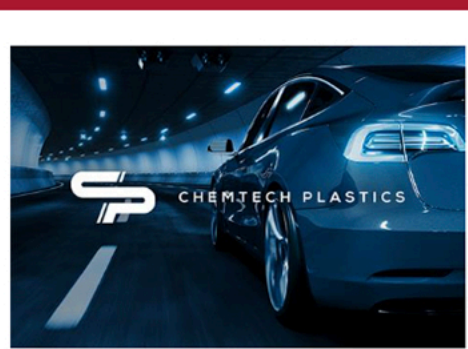
How AI Is Battling Decades of Bias in Safety Protocols

Manufacturing workforce diversity has come a long way, safety protocols have not – until now, enter AI.

[Learn More](#)

[X Tweet](#)

NEWSAnd More



EV's: Injecting Sustainability Into Automobiles

The shift to EVs is happening. There is now more demand for light, durable, and more sustainable plastics and bioplastics than in the past.

[Read More](#)

[X Tweet](#)



Manufacturers to Invest in Improving Efficiency

These insights are part of a nationwide survey of small and middle market companies across the U.S. conducted by Umpqua Bank.

[Read More](#)

[X Tweet](#)



New Report Identifies Research Priorities to Revitalize

Engineering Research Visioning Alliance (ERVA) report offers rapid innovation opportunities to mobilize engineering research.

[Read More](#)

[X Tweet](#)



OSHA Walk-Around Proposal Opens Inspection to Outsiders

OSHA recently announced a proposed rule that would give non-employees a path to participate in worksite investigations.

[Read More](#)

[X Tweet](#)