



Manufacturing's Weekly Insights



The West is Forgetting How to Build Things

As Western automakers slash costs, they're outsourcing the knowledge that built their industries. China is watching—and waiting.

[Stop Bleeding Industrial Knowledge](#)



Making Cybersecurity a Capital Delivery Imperative

To build resilient, secure infrastructure, cybersecurity must move upstream and become a priority.

[What Must Change](#)

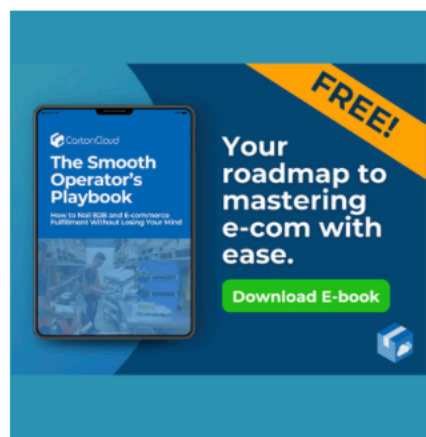


How Smart Tech Turns Uncertainty into Opportunity

How manufacturers are using smart technology to transform supply chain unpredictability into a strategic edge and drive industry innovation.

[The New Normal](#)

NEWSAnd More



How to Nail B2B and E-Commerce Fulfillment

CartonCloud's free e-book is your step-by-step guide to smoothly adding e-commerce to your bulk operations.

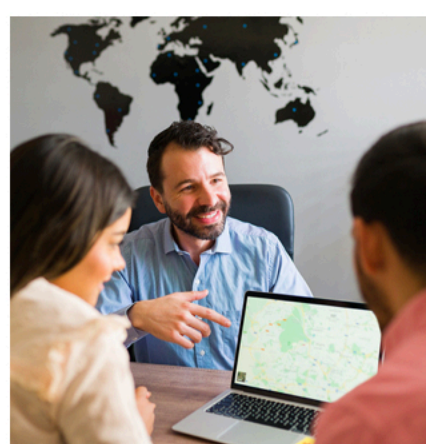
[Download the E-book](#)



How Gen Z and Millennials Are Changing 401(k) Investing

Younger Americans reshape 401(k) investing with tech-focused and digital asset ETFs, while Boomers still favor stability.

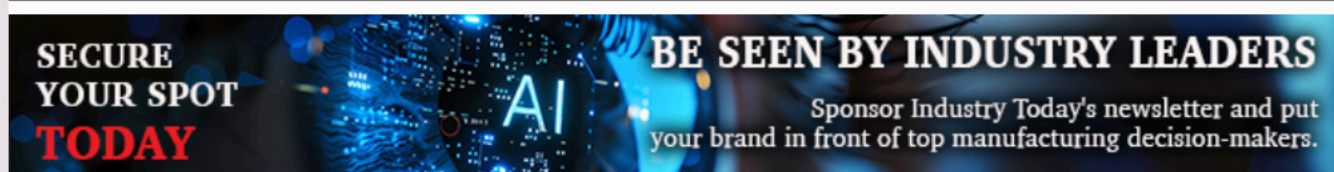
[Different Generational Needs](#)



Section 174 Didn't Close the Door on Global Talent

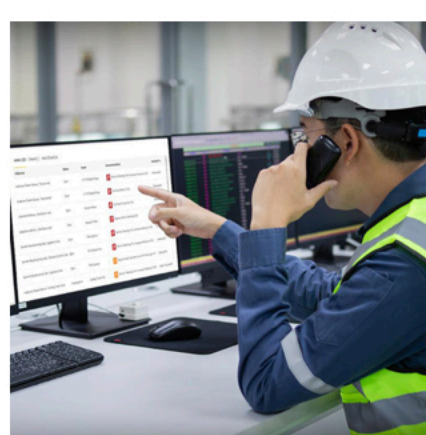
Does Section 174 hurt outsourced tech teams? It's not the end of nearshoring—just a push toward better global delivery.

[The War for Talent](#)



If you would like to contribute to Manufacturing's Weekly Insights with an article, case study, press release, whitepaper or more, please contact Susan Poeton, Publisher via email at spoeton@industrytoday.com

View Full Press Releases



Fluke Reliability Integrates eMaint with Azima AI

Integration of AI-powered vibration analytics with CMMS enables predictive maintenance, reducing downtime and optimizing costs.

[Read More](#)



Evolve IP's Double Team Boost

Cloud collaboration specialist, Evolve IP, has welcomed two additions to its solutions team, to further enhance its wider partner support.

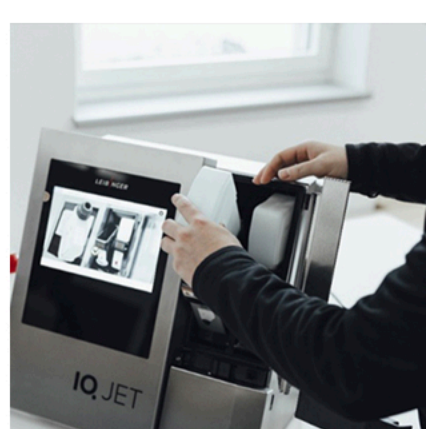
[Read More](#)



Single Beam Couplings for Light-Duty Applications

Ruland now offers MI-series single beam couplings, expanding its zero-backlash beam coupling line to include one, four, and six beam styles.

[Read More](#)



2D Migration, Also Known as GS1 Sunrise 2027

The facts about printing 2D codes efficiently and with value.

[Read More](#)



The Gund Company Acquires IDI Fabrication

Expanding capabilities in engineered material solutions.

[Read More](#)



You are receiving this email because you subscribed to receive relevant news from Industry Today. If you haven't already done so please update your preferences. Of course you may unsubscribe at any time.

[Manage My Email Preferences](#) | [Unsubscribe Now](#)

[Home](#)

[About](#)

[Contact](#)



©2025 All Rights Reserved | 472 Meeting Street, Ste C-156, Charleston, SC 29403, USA